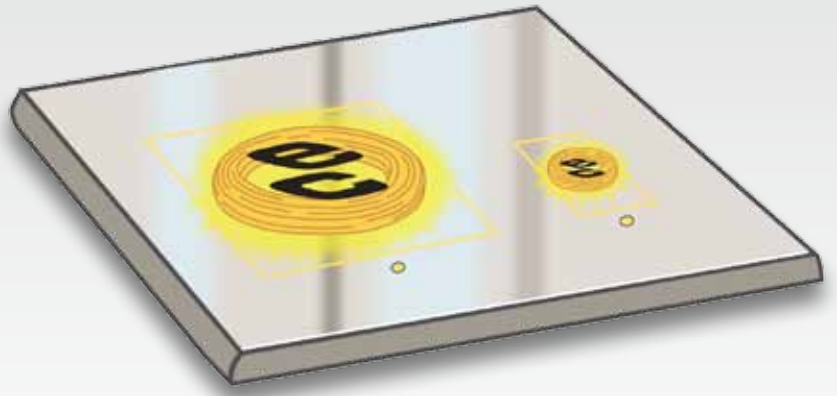


## Wireless Charging



## Convenient charging of battery-powered electronic devices



Simplify the way you live with eCoupled™ intelligent wireless power. With eCoupled technology, ordinary work surfaces are transformed into wireless charging stations, eliminating the need for power cords and battery chargers around the home.

**How Wireless Power Works:** Wireless power uses inductive coupling to transfer energy from charging surfaces to any eCoupled-compatible device. Coils strategically placed in the surface areas adapt eCoupled technology's operation to match the needs of the devices it powers. This two-way communication keeps devices running at peak efficiency.

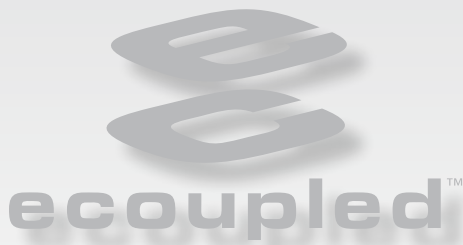
**Simple:** Eliminate the need for separate portable charging devices to fit various appliances. Charging surfaces can charge multiple devices regardless of voltage requirements.

**Safe:** By eliminating the need for electrical outlets as an energy source, wireless power greatly reduces the risk of electrical shock and offers protection from electrical surges.

**Convenient:** Leggett & Platt's® use of eCoupled technology in residential furniture transforms ordinary surfaces into wireless charging centers, eliminating the need for power cords and battery chargers.



P.O. Box 757 • No. 1 Leggett Road  
Carthage, MO 64836  
(800) 888-4569 or (417) 358-8131 • Fax: (417) 358-6996  
E-mail: [hfc@leggett.com](mailto:hfc@leggett.com)  
[www.HomeFurnitureComponents.com](http://www.HomeFurnitureComponents.com)



## Wireless Charging

---

### Frequently Asked Questions

---

**Which Leggett & Platt® Home Furniture Components are equipped with eCoupled technology?**

Leggett & Platt Home Furniture Components (HFC) is developing eCoupled technology for the Residential Furniture Industry, targeting both Case Goods and Upholstered Furniture. In both cases, this would allow the elimination of unsightly power cords and battery chargers in home living areas.

**Who developed eCoupled technology?**

Fulton Innovation created eCoupled technology and has worked with the technology for more than 10 years. Fulton is based in Ada, Michigan, and develops new technologies for commercial and residential use. You can learn more about Fulton Innovation by visiting their website at [www.FultonInnovation.com](http://www.FultonInnovation.com).

As a part of an exclusive partnership with Fulton Innovation, Leggett & Platt HFC will offer eCoupled technology as a part of our Furniture Components portfolio of innovative new products.

**Will any device charge with eCoupled technology?**

Leggett & Platt's HFC products with eCoupled technology require eCoupled compatible devices. Leggett & Platt's HFC product will be the primary charging coil and the devices must have a secondary coil for charging to occur.

**Will these other eCoupled-compatible devices cost more?**

Manufacturers determine product pricing depending on features and benefits. eCoupled technology provides great value, benefits, and leading-edge technology many consumers will pay more for.

**Is eCoupled technology proven? How do we know it works?**

Fulton's parent company, Alticor, used eCoupled technology in its eSpring water filtration system, which has been on the market for over six years with more than 1.5 million devices sold in 36 countries.

**How much energy can wireless power provide?**

Leggett & Platt's HFC products with eCoupled technology can power a range of devices, from the milliwatts required by a cellular phone to the kilowatts required by laptop computers.

**How long does it take to charge devices wirelessly?**

Devices charge at a rate comparable to traditional power sources.



P.O. Box 757 • No. 1 Leggett Road  
Carthage, MO 64836  
(800) 888-4569 or (417) 358-8131 • Fax: (417) 358-6996  
E-mail: [hfc@leggett.com](mailto:hfc@leggett.com)  
[www.HomeFurnitureComponents.com](http://www.HomeFurnitureComponents.com)